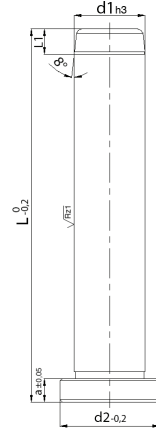


D08
Kolon

Malzeme : Asil Çelik 1.1213 (Cf 53)
Sertlik : 62± 2 HRC
Isıl İşlem : İndüksiyon

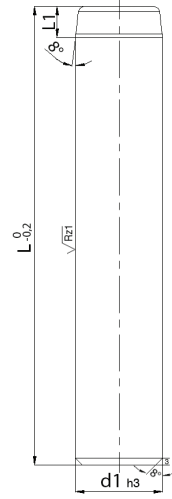
Sipari• Kodu	Ø	d1	L	L1	d2	a
D08_12080	12	12	80	4	16	4
100	12	12	100			
120	12	12	120			
D08_18120	18	18	120	7	22	6
140	18	18	140			
160	18	18	160			
D08_30160	30	30	160	7	36	6
200	30	30	200			
240	30	30	240			



D09
Kolon

Malzeme : Asil Çelik 1.1213 (Cf 53)
Sertlik : 62± 2 HRC
Isıl İşlem : İndüksiyon

Sipari• Kodu	Ø	d1	L	L1
D09_12100	12	12	100	6
125	12	12	125	
D09_18125	18	18	125	6
160	18	18	160	
D09_30160	30	30	160	7
240	30	30	240	



D50

Konik Kitleme

Malzeme : Asil Çelik 1.7131 (16MnCr5)
Sertlik : 62± 2 HRC
Isıl İşlem : Sementasyon

Sipari• Kodu	Ø	d1	L	L1	L3	L5	L6	L7	L8	d2	d3
D50_12	12	12	34	16	4.5	9.6	8.6	8	7.5	M4	M3
D50_14	14	14	34	16	6	12.4	6	7.5	8	M5	M4
D50_16	16	16	34	16	6	12.4	5.8	7.5	8	M5	M4
D50_20	20	20	54	26	9	19.7	10.6	12	9.5	M8	M6
D50_25	25	25	54	26	10	19.7	9.2	11	11	M8	M6
D50_30	30	30	72	35	14	25	12.2	15	13	M10	M8
D50_32	32	32	72	35	14	25	12.2	15	13	M10	M8
D50_42	42	42	92	45	18	27	16.8	16	13	M10	M8

